

The Alumil logo is displayed in a bold, dark blue, sans-serif font. It is positioned within a yellow diamond-shaped graphic element that is part of a larger geometric design on the left side of the page. The background of the entire page is a photograph of a city skyline, with the Empire State Building being the most prominent feature on the right side. The scene is viewed from an elevated position, likely a rooftop terrace, with some furniture and a table visible in the foreground.

Alumil

The Alumil SUPREME Folding Door System logo is located at the bottom left of the page. It features the Alumil logo in white, followed by a yellow chevron symbol pointing to the right, and the word 'SUPREME' in a large, white, sans-serif font. Below this, the words 'Folding Door System' are written in a smaller, white, sans-serif font. The background of this section is a dark blue geometric shape that overlaps with the rest of the page's design.

Alumil > **SUPREME**
Folding Door System



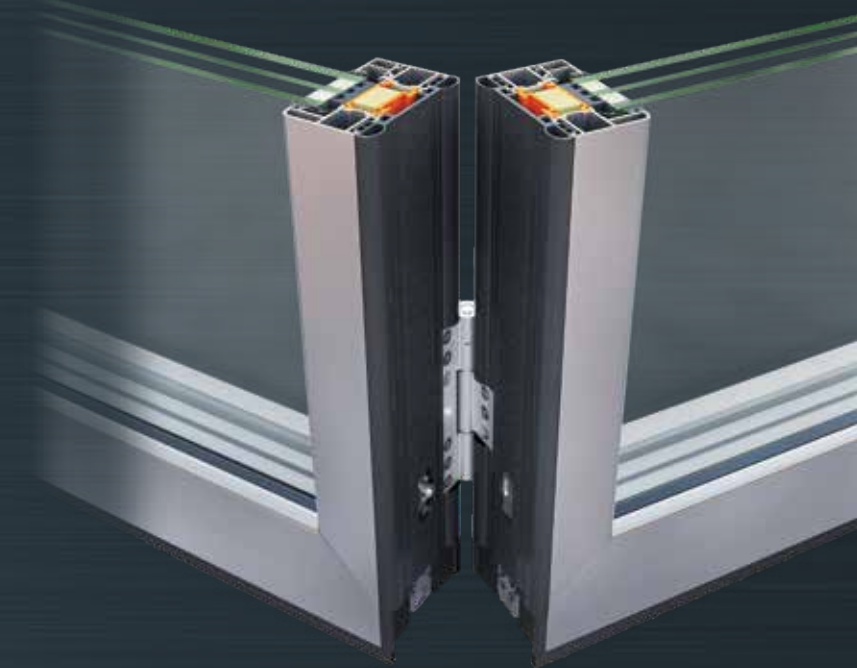
Astonishing folding doors with unique minimal design, excellent thermal insulation and overall performance

SUPREME SF85 is an exceptional folding door system, providing minimal aesthetics, outstanding thermal insulation and the ability to create constructions of very large dimensions and extraordinary low sightlines. Its state-of-the-art fittings are designed to achieve unparalleled performance and a smooth, bottom-slide, operation.

Ideal for flawless residential use as well as for heavy-duty constructions and high-end applications. Its construction flexibility (odd and even number of vents, corner typologies and semi-structural versions), provides numerous solutions, meeting every need in a very effective and elegant way.

Alumil > SUPREME SF85

- / Extremely reduced sightlines offering an excellent minimal design (105 mm sash to sash).
- / Very large dimensions are possible in terms of maximum height (up to 4 m), sash width (up to 1.5 m per sash) and total construction length (infinite).
- / Outstanding thermal insulation for maximum energy savings.
- / Extreme performance in terms of watertightness, air permeability and wind load resistance.
- / Enhanced safety and anti-burglary protection, with quadruple locking latches and anti-lift roller hinges (RC2 certified).
- / Ultra-smooth and long-lasting operation.



Version
SUPREME SF85
SEMI-STRUCTURAL
with low threshold



Alumil SUPREME SF85

Technical characteristics

Visible aluminium face width	105 mm
Sash width	85 mm
Sash weight	Up to 200 Kg
Glazing	20-53 mm standard 34-75 mm semi-structural
Operation	Bottom slide
Thermal insulation	Polyamides 40 mm, NRG Bar, Insulation foam

Performance

Thermal insulation EN ISO 10077-2	$U_w = 0,9 \text{ W/m}^2\text{K}$
*For 3-sash folding door 3,9 x 3,5 m and $U_g = 0,6 \text{ W/m}^2\text{K}$	



Since 1961
GEMM
Windows & Doors
A better outlook on life

1590 The Queensway
Toronto, Ontario
M8Z 1V1

416-533-4331
info@gemwindows.com

Alumil

www.alumil.com