



ARTEMA™



STEP INTO DISTINCTION

GRAND ENTRANCES





THE PERFECT BLEND OF ELEGANCE AND STRENGTH

Introducing Artema™ – a bold collection of large-format fiberglass doors designed to transform your entryway.

Fiberglass redefines what's possible for large-format doors, combining the beauty of natural materials with unmatched performance. Resistant to warping, cracking and rotting, it ensures your door remains stunning and stable in any climate with minimal upkeep. Unlike wood or steel, fiberglass offers both warmth and versatility, replicating rich woodgrain textures or smooth, modern finishes without the vulnerabilities of dents, rust or decay. This innovative material seamlessly blends natural aesthetics with advanced engineering, creating doors that are elegant yet durable—offering timeless style and worry-free performance.

BLENDING TECHNOLOGY AND ARTISTRY

Artema doors are engineered for exceptional strength and security, built to withstand the elements and perform reliably. Reinforced steel bars in the stiles ensure superior structural integrity, while their robust 2.25" thickness provides unmatched stability and added protection. Designed for long-lasting performance, Artema doors offer cutting-edge durability and, most importantly, peace of mind.

Redefining what's possible with fiberglass entry doors, Artema provides unparalleled size and style customization. With panels available up to an impressive 5' width and 10' height, Artema creates grand entrances once achievable only with other materials. Elevate your home with the only large-format fiberglass door solution that blends custom luxury with modern innovation.



Walnut Grain Panel | AR-609 | Arabica

What sets Artema™ apart? It's the commitment to quality and investment in world-class manufacturing technologies. Every Artema woodgrain fiberglass door is built with fiberglass clad components in order to deliver a finish that is seamless, strong, and, perhaps best of all, completely stainable. The result is a versatile door that flawlessly replicates the look, texture and aesthetic of real wood.

For the Artema product line, we craft fully customizable large-format doors with cutting-edge innovation, offering bespoke canvases where form meets function. From sleek minimalism to timeless elegance, every impeccable design can be precisely tailored to capture your vision and reflect your lifestyle.

We embrace the exceptional, celebrate the refined and revere the bold. Engineered with performance and durability in mind, Artema doors provide the strength of fiberglass without sacrificing beauty, ensuring your home is stunning, secure and sustainable.

Artema opens the door to a world where the remarkable is standard, where luxury is welcomed and where your home opens with a statement of purpose. Step beyond the threshold. Step into distinction.

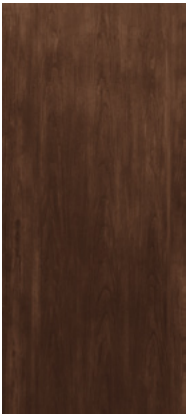
Artema fiberglass doors:

- Do NOT warp, rot or crack like wood doors and require less maintenance
- Do NOT rust or dent like steel doors
- Have excellent grain and stain matching across fiberglass components
- Are engineered for the extreme hot and cold temperatures of North America

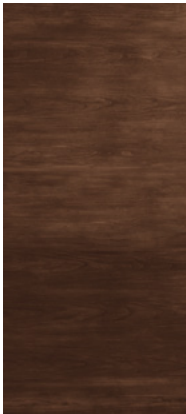
CONTEMPORARY STAINLESS INLAY

Slab Design Options

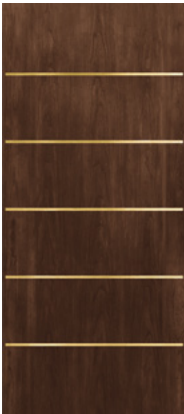
Artema stainless steel inlay doors combine sleek, modern aesthetics with exceptional durability, offering a sophisticated touch to any entryway. These doors feature customizable inlay designs to match your unique style preferences. The stainless steel inlays come in Stainless, Gold and Black finishes.



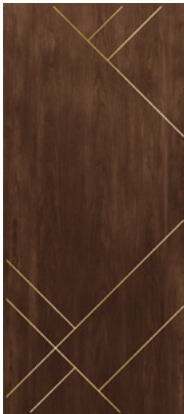
AR-705



AR-706



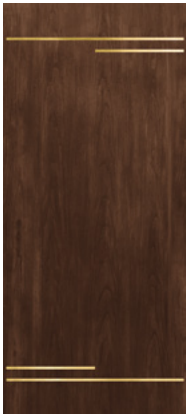
AR-613



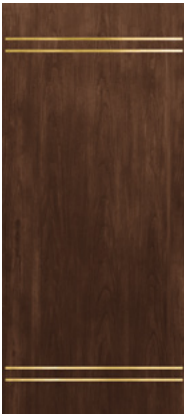
AR-614



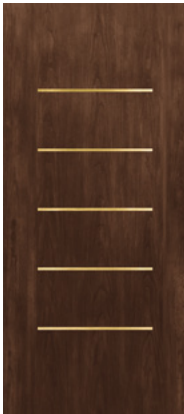
AR-608



AR-609



AR-610



AR-611

Standard Swing Slab Sizes

42" x 9'	48" x 9'
42" x 10'	48" x 10'

Standard Pivot Slab Sizes

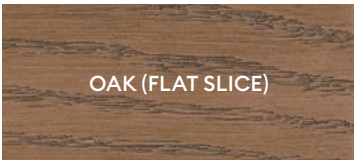
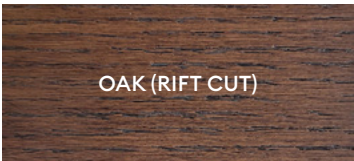
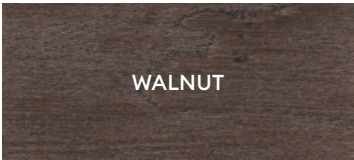
48" x 9'	60" x 9'
48" x 10'	60" x 10'

Custom Sizes

Custom sizes available.
Up to 60"W in Pivot and up to 48"W in Hinged (or Swing).

Grain / Texture

Refer to page 13 to discover the full range of stain and paint color options, thoughtfully curated to complement your design choices and unique style.



Inlay Options



Available in Stainless, Gold, and Black finishes.



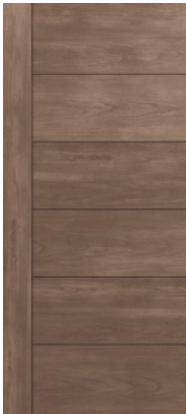
CONTEMPORARY ENGRAVED

Slab Design Options

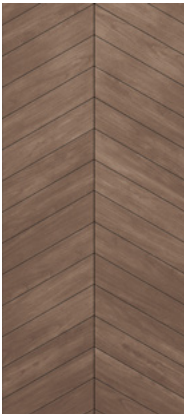
Artema engraved door options offer a blend of elegance and craftsmanship, featuring intricate designs that enhance the aesthetic appeal of any entrance. These doors can be customized to reflect your personal style with a variety of patterns and finishes.



AR-550



AR-551



AR-953



AR-959



AR-955



AR-956



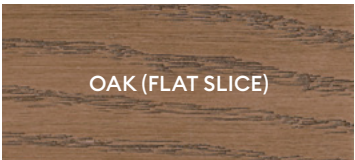
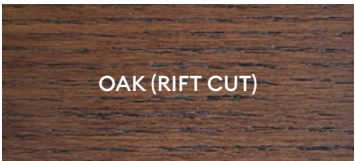
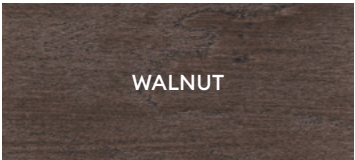
AR-957



AR-958

Grain / Texture

Refer to page 13 to discover the full range of stain and paint color options, thoughtfully curated to complement your design choices and unique style.



Standard Swing Slab Sizes

42" x 9'	48" x 9'
42" x 10'	48" x 10'

Standard Pivot Slab Sizes

48" x 9'	60" x 9'
48" x 10'	60" x 10'

Custom Sizes

Custom sizes available.
Up to 60"W in Pivot and up to 48"W in Hinged (or Swing).

LUXURY STARTS FROM THE INSIDE

LARGE-FORMAT DOOR SYSTEM:

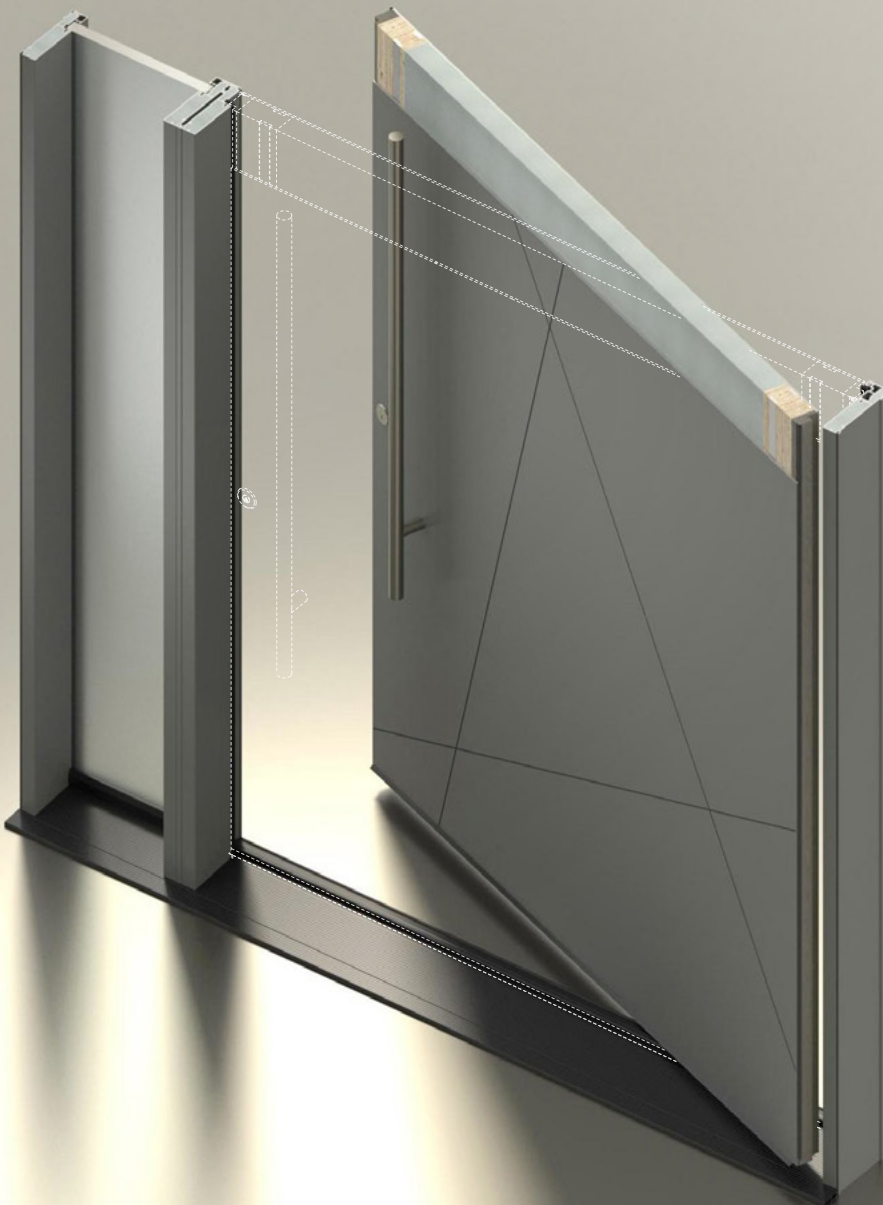
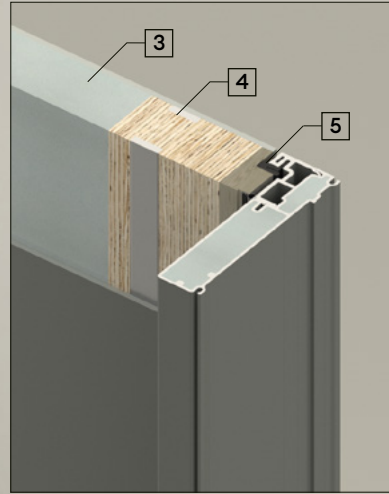
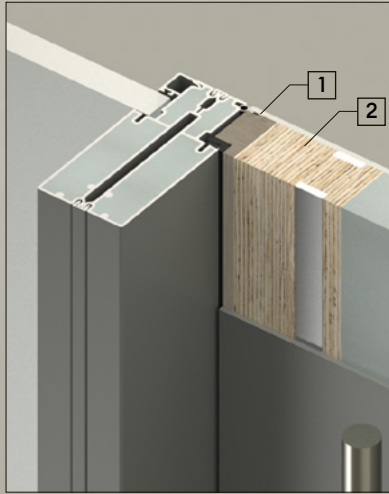
- 1** 1/8" thick fiberglass skins with smooth or woodgrain texture. The woodgrain textures are available in vertical and horizontal grain directions. Skins are made using fiberglass mat and polyester resin construction.
- 2** The internal frame construction consists of 5" wide (4" LVL, 1" Maple edge) for both vertical stiles and 2 1/2" wide (1 1/2" LVL, 1" Maple) for the top and bottom rails.
- 3** The core is filled with a 2" thick polyethylene terephthalate (ArmaPET) insulation board. This PET board is a structural foam board and is made with 100% recycled materials.
- 4** Strike stile is 5" wide with steel re-inforcing. Steel re-inforcing is orientated so there is no thermal transfer through panel and in a direction to create a hybrid I-beam effect and extra stiff stile.
- 5** EPDM (Ethylene Propylene Diene Monomer) weather stripping is designed to seal large-format doors with precision and reliability.
- 6** All components are bonded together with polyurethane adhesives.

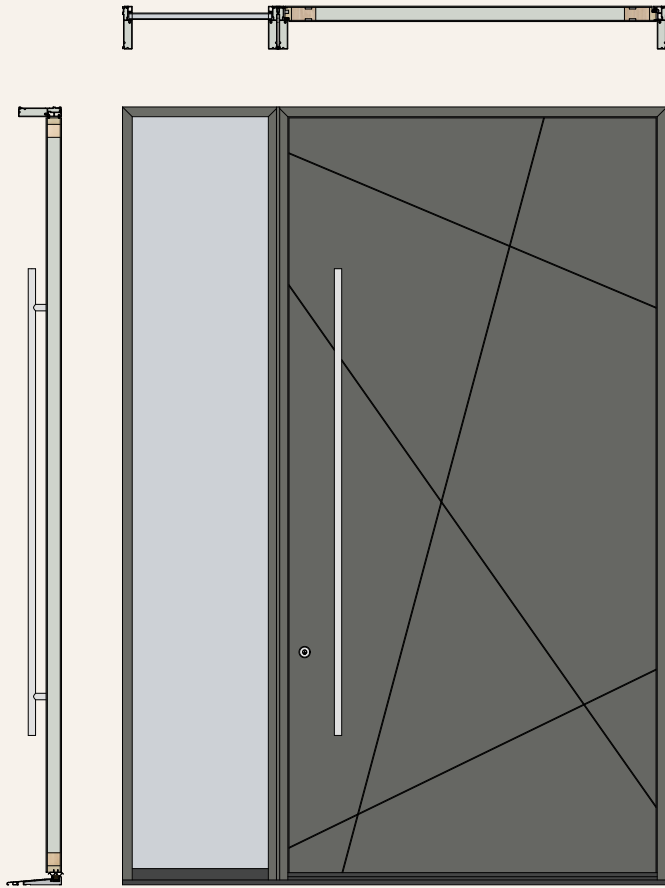
LARGE-FORMAT PIVOT DOOR APPLICATIONS:

- The same 5" steel re-inforced stile that is used on the strike side is also used on the hinge side.

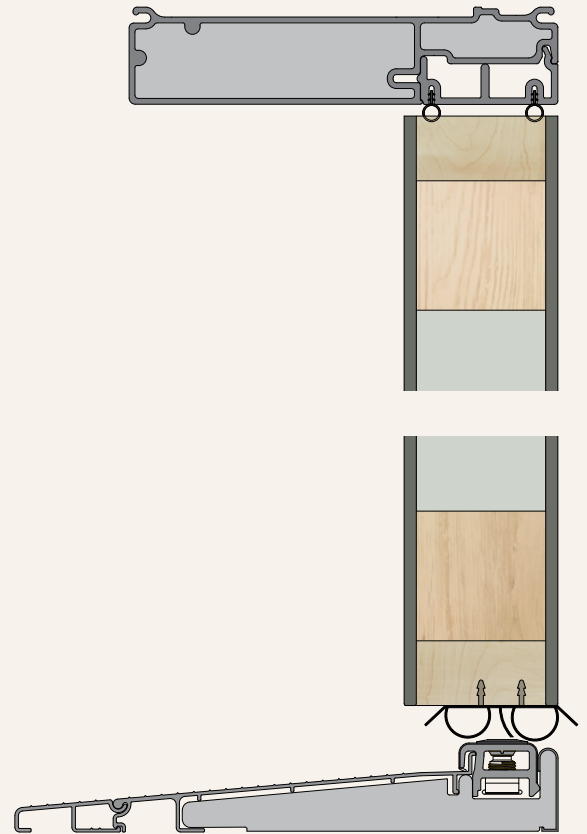
SUSTAINABILITY

- The doors are engineered for optimal insulation to reduce heat loss and boost home energy efficiency.
- Each Artema door slab features a core made from 100% recycled materials.
- Artema is at the forefront of leveraging advanced materials to enhance product sustainability and efficiency.

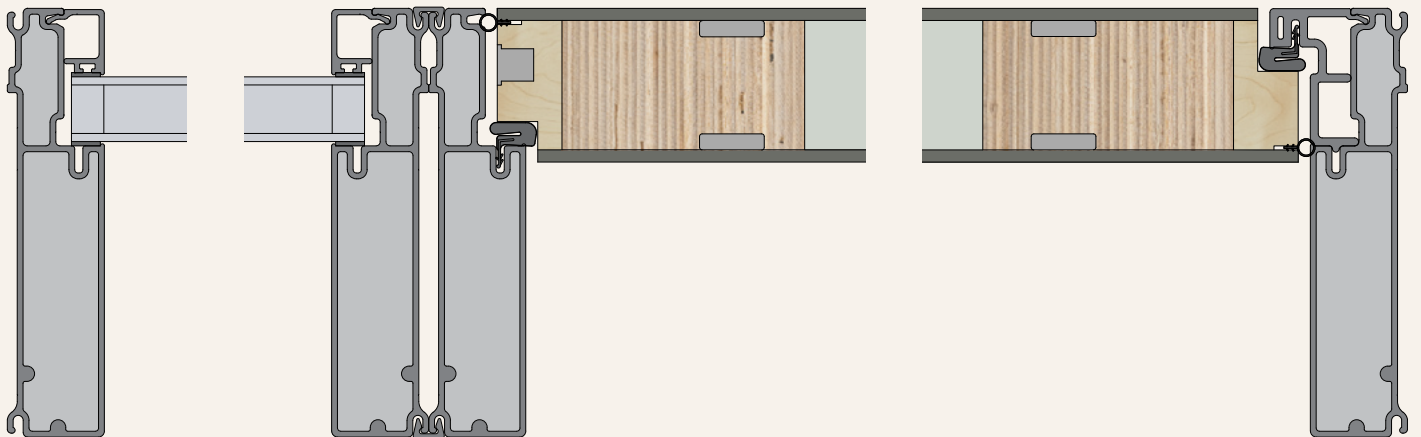




SECTION ELEVATION & PLAN (PIVOT DOOR)

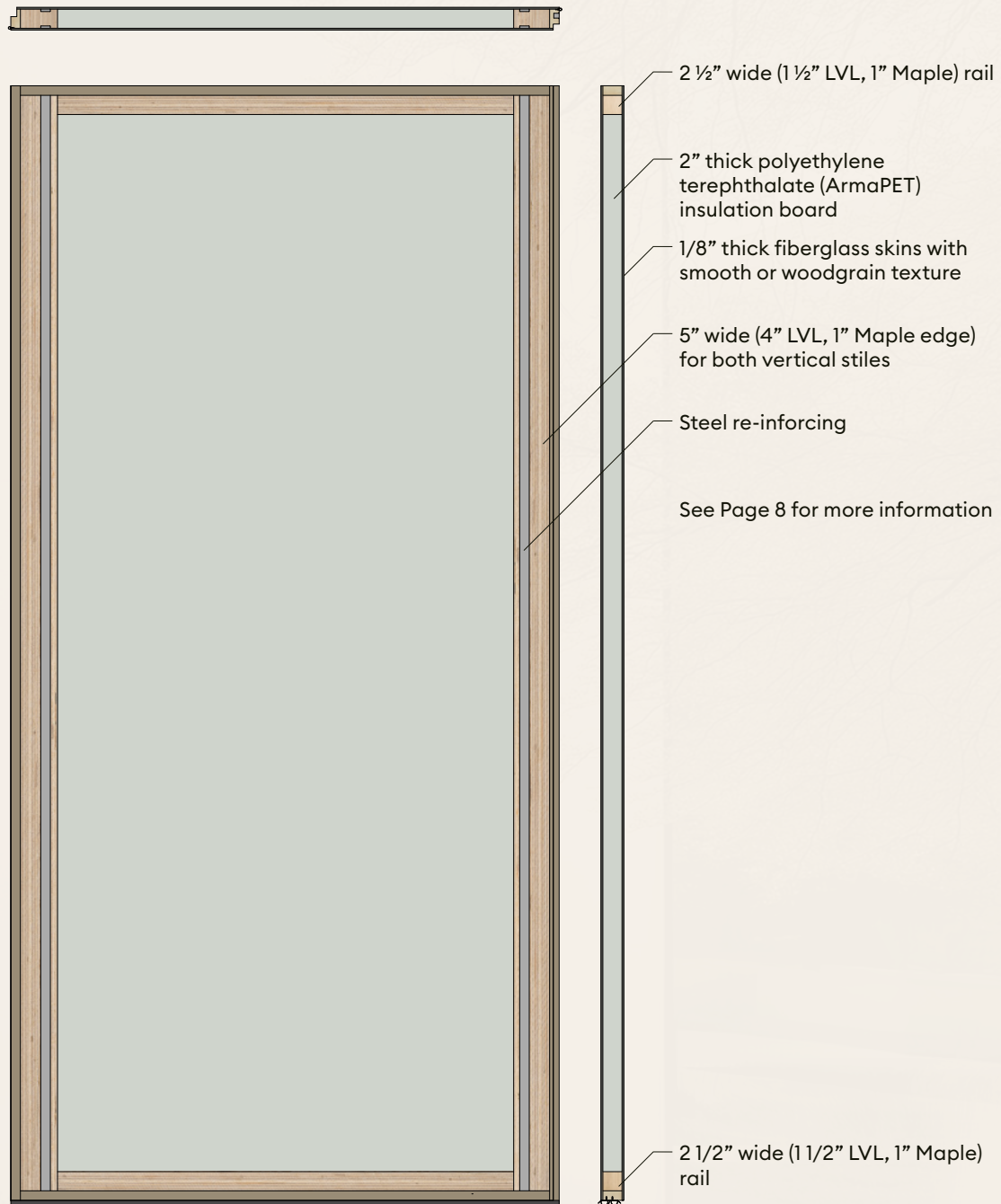


DETAIL SECTION (PIVOT DOOR)



DETAIL PLAN (PIVOT DOOR)

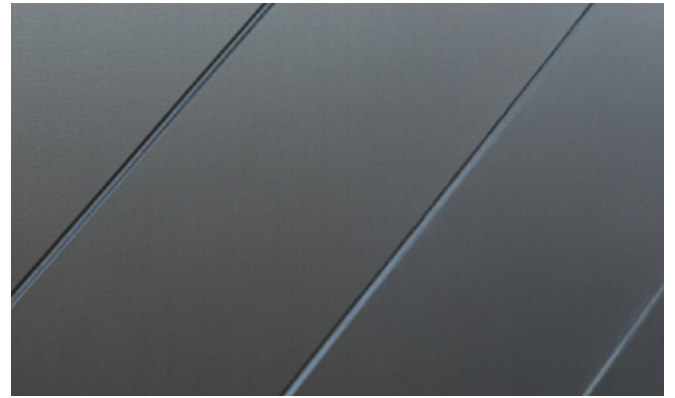




SECTION ELEVATION & PLAN (PIVOT DOOR)



ARTEMA™

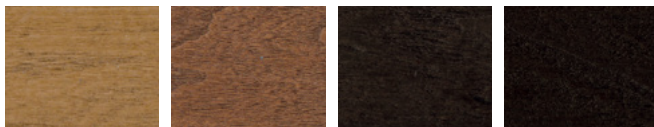


STAIN COLORS:

Featuring 20 stain colors, each shade has been carefully selected to enhance the natural beauty of an Artema fiberglass door system while providing long-lasting durability against the elements. Whether you are looking for a warm wood-tone stain or a sleek dark finish, there is a range of options to suit your aesthetic. These stain colors are designed to stand the test of time, maintaining their beauty and richness for years to come.



Alpaca Sweet Honey Rossi Crimson



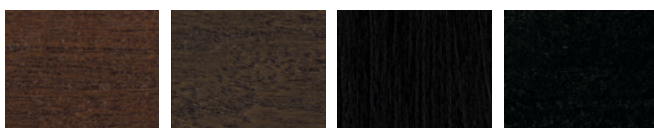
Tea with Milk Cashew Brew Bridle



Harvest Auburn Cigar Kenzie



Antique Barrel Charcoal Denim Dusk



Arabica Acorn Midnight Black Stain

PAINT COLORS:

Our curated collection of 21 paint colors is designed to elevate the exterior and interior design of your home. With these on-trend shades, you can transform your Artema door into a true masterpiece that enhances architectural features and reflects your personal style.



Cloud White Decorator's White Virtual Taupe Sable



Creamy Festoon Aqua Commercial Brown Crabby Apple



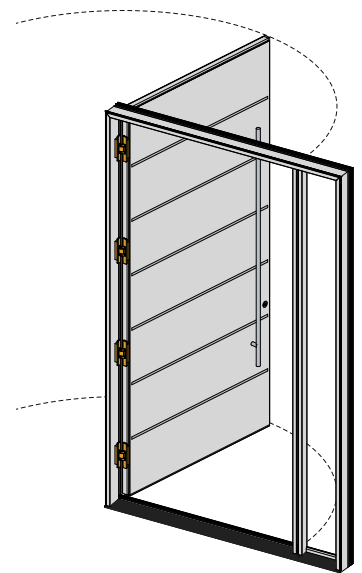
Evergreen Fog Green Sprout Antique Brown Ruby



Slate Windswept Smoke Iron Ore English Ivy

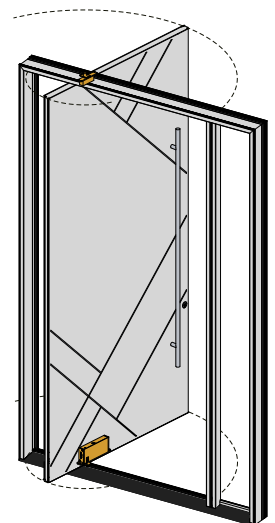
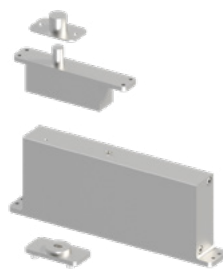


Distance Naval Deep Forest Brown Black



CONCEALED HINGE

Perfect for modern architecture, concealed hinges seamlessly integrate into door frames, combining strength with elegance. Engineered for durability, they effortlessly support heavy, large-format doors while providing a full 180-degree opening for optimal access. Their minimalist design eliminates visible hardware, enhancing a clean, sophisticated aesthetic that aligns with contemporary spaces.



PIVOT HINGE

Our custom pivot hinge offers 2D adjustability at the top and bottom, streamlining installation and enhancing post-installation support. Designed for performance, it blends style and function, complementing modern and classic designs.

The top pivot ensures smooth movement, while the bottom pivot supports the door's weight, reducing structural strain for reliable operation. Our standard sill with a Sill Riser provides excellent water resistance, addressing common issues with flush ADA sills in pivot systems.



MULTIPOINT LOCK

Sleek and minimal design eliminates visible hardware, contributing to a clean and modern aesthetic that complements contemporary architectural styles. As soon as the door is pulled shut, the automatic latchbolts instantly throw 20mm and are secured to prevent them from being forced back. By turning the key or the knob, the center deadbolt will engage and lock the top and bottom latchbolts to become a 3-deadbolt locking system. Optional magnet catches or roller catches with turn bolt action multipoint lock are also available.



DOOR HANDLE OPTIONS

Crafted from attractive and durable materials, our outstanding lockset hardware combines beauty with security, providing peace of mind. Its versatile design caters to both right-hand and left-hand doors, ensuring it complements a wide range of door styles.



PULL BAR ROUND & SQUARE

Long entry door pulls are offered in 48" and 72" lengths, with three versatile mounting styles available: concealed surface and back-to-back mounting. It comes in three finishes: flat black, satin brass and polished stainless steel. These pull bars are designed to accommodate an elegant contemporary door look.

CONTACT US:



301291 Concession Rd 2 SDR,
Hanover, ON, N4N 3B8

(519) 506-2117

ArtemaDoor.com



ARTEMA™ reserves the right to make changes to product design, finishes and technology. Doors depicted in this brochure may not be exactly as shown.

Version:01-2025

Plain Sliced Oak Grain | AR-614 | Alpaca